

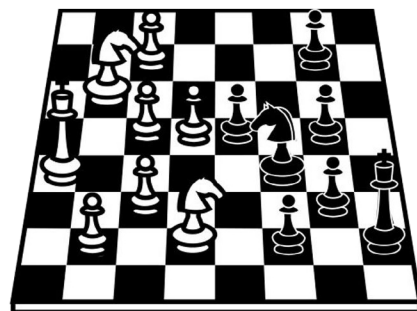
# LAST SCHOLASTIC CHESS TOURNAMENT SEASON 2016 - 2017

## SUNDAY JUNE 11th 2017



### Loisirs St-Henri

530, du Couvent st.  
Montreal, H4C 1R2  
Metro Place Saint-Henri



**Registration :** On site from 10:30 to 11:15 AM  
The tournament starts at 11:30 AM and lasts about 4 hours.

**Entry Fee on site:** \$20

**Pre-registration on line:** \$20

[www.chess-math.org](http://www.chess-math.org)

\*You have until noon Friday June 9 to pre-register

\*In order for the tournament to start on time we strongly recommend advance registration

Open to all kids from kindergarten to CEGEP. Rated players will play according to rating. The tournament lasts about 3 to 4 hours. Our tournaments aim to provide pleasure to all levels of players, including those who have just learned how to play!

**Prizes:** Medals are awarded to first and second place finishers of each section, and ribbons are awarded to third place finishers. Door prizes! Badges to collect for all and a gift to be drawn among participants.



Information : Chess'n Math

[www.chess-math.org](http://www.chess-math.org) - (514) 845-8352

