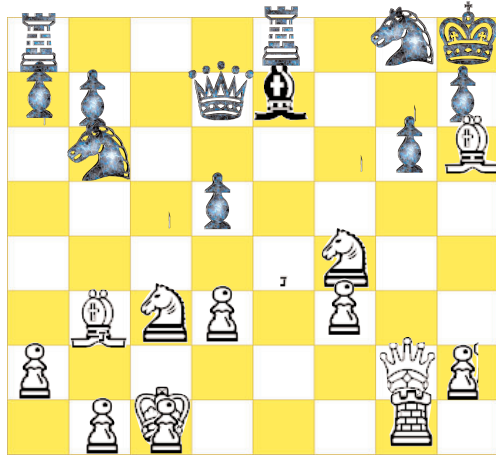


# LAST REGULAR CHESS TOURNAMENT 2019 - 2020 SEASON



White plays and MAT in 4

## SECTION 900+

Special prizes for winners

1st: 50\$/2nd: 25\$/3rd: 25\$

\*\*Best result rating -1000: 25\$

\*\*Pending a minimum of 16 players  
in this section

(Prizes are in the form of gift certificates  
redeemable at Strategy Games.)

**Schedule:** Sunday May 24th 2020

\*The tournament starts  
at 11h30AM.

**Location :** Loisirs St-Henri  
530 rue du Couvent  
Montreal, H4C 1R2

**Registration on site :**  
25\$\* (10:30 to 11:15AM)

**Pre-registration online**  
([chess-math.org](http://chess-math.org)) : 20\$

\* Deadline: Noon on  
May 22nd, 2020 (Friday)

(3' ... κμ8 + 'σδλ#) + ' σxδg#  
(5' ... κμλ 3' σxδe#) 3' σxδe+ κl8  
2019/2020: 1' ηxδe+ μxδe 5' Βδλ+ κxδλ

**Information : Chess'n Math**  
[www.chess-math.org](http://www.chess-math.org) - (514) 845-8352

